

1 2 3 4 5 6 7 8

F

F

E

E

D

D

C

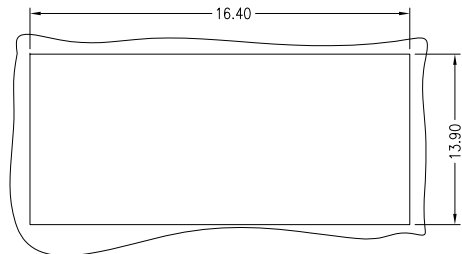
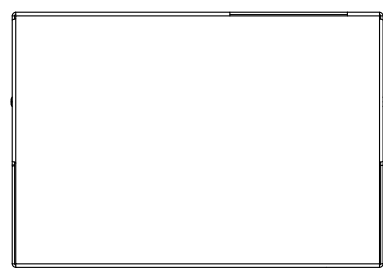
C

B

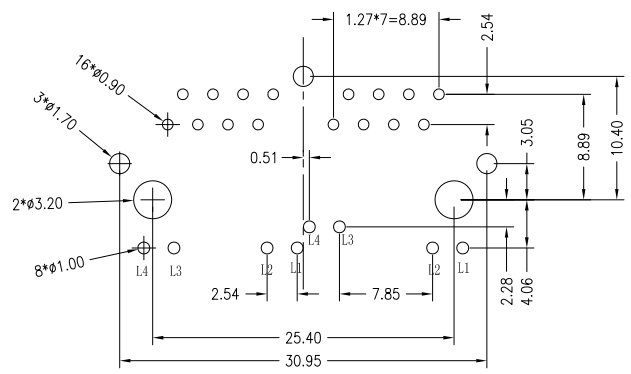
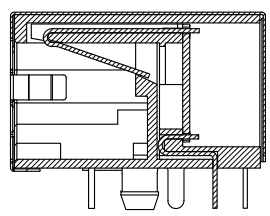
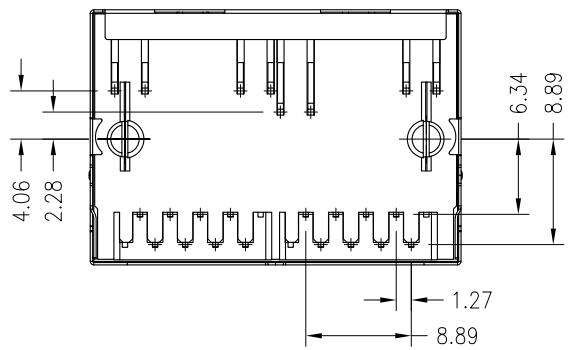
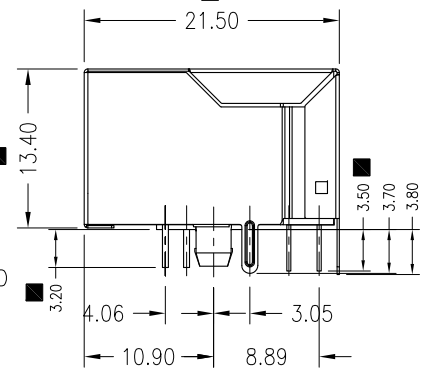
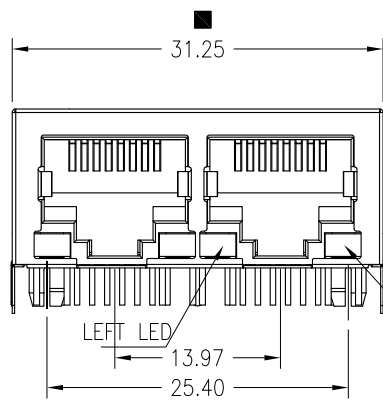
B

A

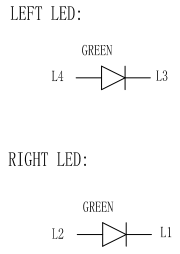
A



RECOMMENDED  
PANEL CUTOUT DIMENSION



SUGGESTED PCB LAYOUT  
DIMENSIONAL TOLERANCE: .XX ±0.05[0.002]



NOTES:

- MATERIALS:  
HOUSING -PBT POLYESTER UL94V-0  
MIXED GLASS FIBER.  
STANDARD COLOR-BLACK.  
CONTACTS -0.35mm THICK PHOS-BRONZE PLATED  
WITH G/F GOLD AND TIN  
IN SOLDER AREA.  
SHIELD-0.2mm THICK COPPER ALLOY,  
PLATED WITH NICKEL.
- CAVITY CONFIRMS TO FCC RULES AND REGULATIONS  
PART 68,SUBPART F.

REV.	ECN. NO.	DRAWN	DATE	EC.content
A	NEW	LLDONG	05/10/2017	



⊗: QUALITY CONTROL ITEM	GENERAL TOLERANCE .X± 0.38 X.'± 2' .XX± 0.25 .X'± 1' .XXX± 0.13	PART NO.: FDB-DB15-3403 TITLE:RJ45,1*2 CONN,W/LED,8P8C 10/100,FILTER		
APPROVED		UNIT: mm	SCALE: 1:1	SHEET: 1/3
CHECKED				REV.: A
DRAWN				

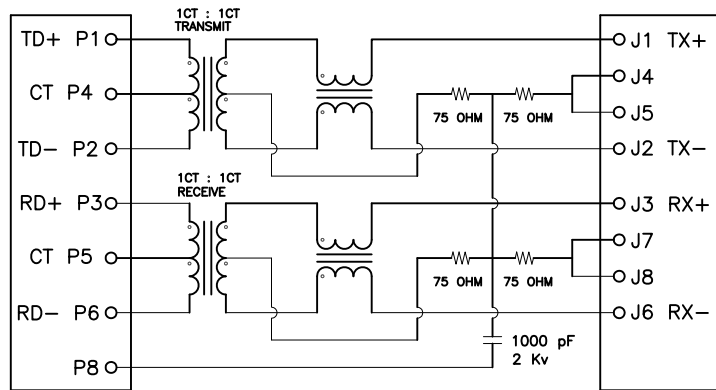
SIZE: A4

F

3. SCHEMATIC:

CONNECTOR SOLDER SIDE

RJ45 CONTACT SIDE



4. ELECTRICAL CHARACTERISTICS :

TEST NOTES:(25°±5°C)

1. TR:(100KHz,0.1V); 100%

PINS:(P1,P2):(J1,J2)=1:1±3%;(P3,P6):(J3,J6)=1:1±3%

2. LX:(100KHz,100mV,8mA, DC Bias) 100%

PINS:(P1,P2),(P3,P6)=350uH MINIMUM

3. DCR: 100%

PINS:(J1,J2),(J3,J6)=1.2Ω MAXIMUM

4. HIPOT: 100%

PINS(P1,P2)TO(J1,J2),(P3,P6)TO(J3,J6)=1500VAC FOR 2 SECONDS

5. INSERTION LOSS:

-1.0dB MAXIMUM AT 1MHz TO 100MHz;

6.RETURN LOSS:

-20dB MINIMUM AT 1MHz TO 30MHz;

-15dB MINIMUM AT 30MHz TO 60MHz

-10dB MINIMUM AT 60MHz TO 80MHz

7.CROSS TALK:

-30dB MINIMUM AT 1MHz TO 100MHz

8.COMMON TO COMMON MODE REJECTION:

-30dB MINIMUM AT 1MHz TO 100MHz

e-CONN PART NO:

F D B - D B 1 5 - 3 4 0 3

SHELL CODE  
A: W/O ALLSPRING  
W/LED HOLE

HOUSING CODE  
1: BLACK,LED 對稱

LED COLOR OPTION

CIRCUIT TYPE

PLATING CODE

A

REV.	ECN. NO.	DRAWN	DATE	EC.content
A	NEW	LLDONG	05/10/2017	



⊗: QUALITY CONTROL ITEM		GENERAL TOLERANCE		PART NO.: FDB-DB15-3403			
APPROVED		.X± 0.38	X.'± 2'	TITLE:RJ45,1*2 CONN,W/LED,8P8C 10/100,FILTER			
CHECKED		.XX± 0.25	.X'± 1'				
DRAWN		.XXX± 0.13		UNIT: mm	SCALE: 1:1	SHEET: 2/3	REV.: A

E

D

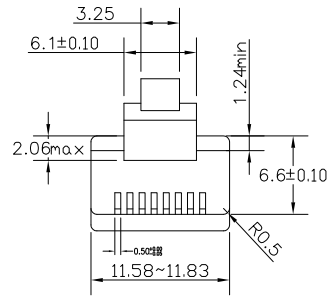
C

B

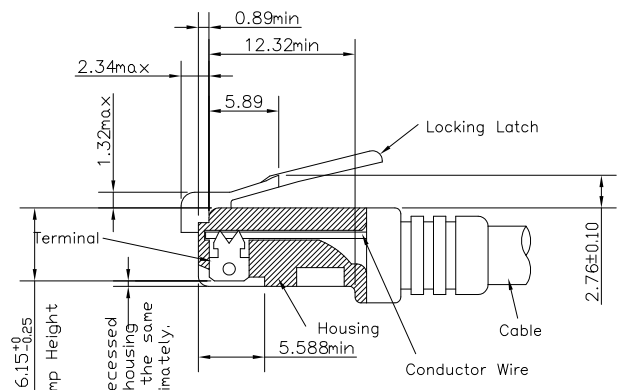
1 2 3 4 5 6 7 8

F  
E  
D  
C  
B  
A

F  
E  
D  
C  
B  
A



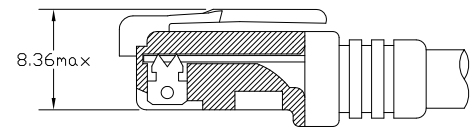
\* There must be no damage to housing or locking latch. There must be no nicks or cuts in cable.  
\* Durability : 750 cycles generally



All contacts recessed below top of housing and must be at the same height approximately.

FOLLOW SPECIFICATION : FCC, PART 68, SUBPART F FIGURE 68.500 (C)(2)(i) AND IEC 603-7 FIGURE 23 & 24

STANDARD MODULAR PLUG ASSEMBLY



FOLLOW SPECIFICATION : FCC, PART 68, SUBPART F FIGURE 68.500 (C)(2)(i)

REV.	ECN. NO.	DRAWN	DATE	EC.content
A	NEW	LLDONG	05/10/2017	



⊗: QUALITY CONTROL ITEM		GENERAL TOLERANCE .X± 0.38 X.'± 2' .XX± 0.25 .X'± 1' .XXX± 0.13		PART NO.: FDB-DB15-3403 TITLE: RJ45, 1*2 CONN, W/LED, 8P8C 10/100, FILTER		
APPROVED		UNIT: mm		SCALE: 1:1	SHEET: 3/3	REV.: A
CHECKED						
DRAWN						

SIZE: A4