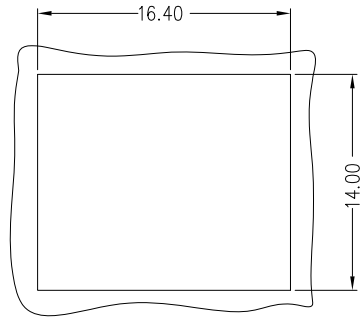
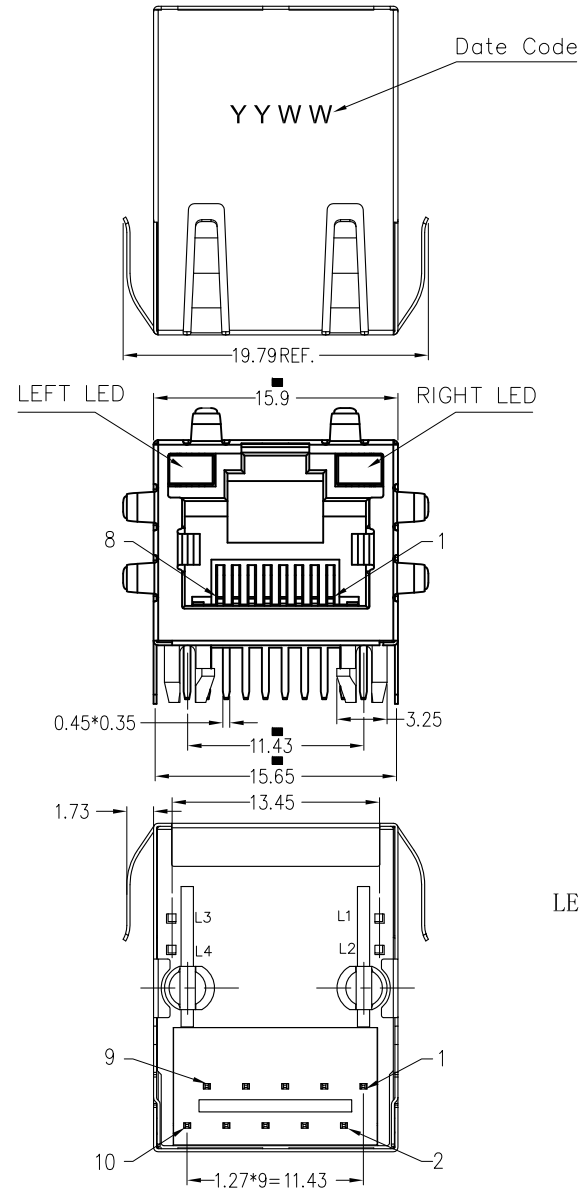
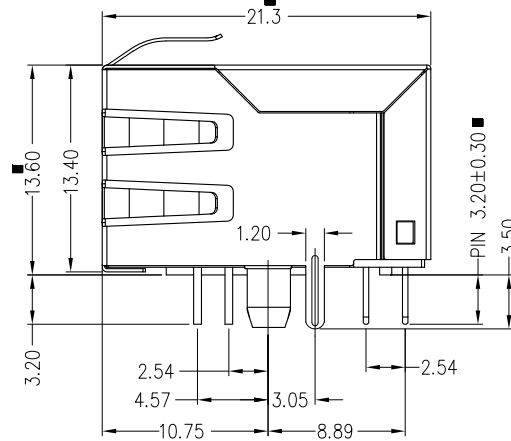


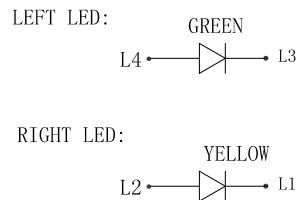
1. MECHANICAL DIMENSIONS :



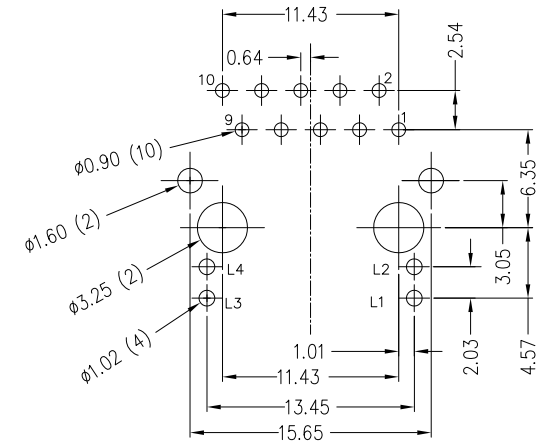
RECOMMENDED  
PANEL CUTOUT DIMENSION



LED CONFIGURATION :



2. PCB LAYOUT :



SUGGESTED PCB LAYOUT  
(TOP VIEW)

DIMENSIONAL TOLERANCE: ±0.05mm

NOTES:

- MATERIALS:  
HOUSING: PBT UL94V-0 BLACK  
CONTACTS: T=0.35 PHOSPHOR BORNZE, 30u" NICKEL MIN UNDERPLATE ON ALL AREA, 100u" TIN ON TERMINATION END, 6u" GOLD ON CONTACT AREA.  
SHIELD: BRASS C2680-H T=0.20mm±0.01 FOGGED (50% SHINE SOLVENT) NICKEL 30u" PLATING.
- JACK CAVITY CONFORMS TO FCC RULES AND REGULATIONS PART 68, SUBPART F

REV.	ECN. NO.	DRAWN	DATE	EC.content
A.0	NEW	YMeng	04/12/2016	



⊗: QUALITY CONTROL ITEM		GENERAL TOLERANCE		PART NO.: FTA-DA14-44P9		
APPROVED		.X± 0.38	X.'± 2'	TITLE:RJ45,CONNECTORS,W/LED,10P,8C 10/100MBPS,POE FILTER		
CHECKED		.XX± 0.25	.X'± 1'			
DRAWN		.XXX± 0.13				
		UNIT: mm		SCALE:1:1	SHEET: 1/3	REV.: A.0

說明: △:備註 ◇:版本變更 ⑨:尺寸序號 ■:重點尺寸 ▼:CPK尺寸

DOCUMENT NO. : ZER0013/A.3

SIZE: A4

DIE ON: YKXXX

F

E

D

C

B

A

F

F

D

C

B

A

1

2

3

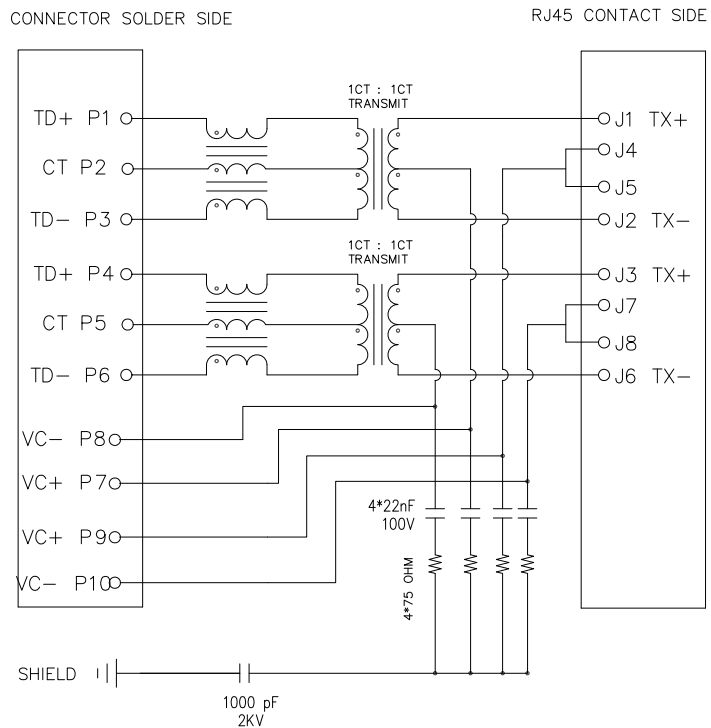
5

6

7

8

4. SCHEMATIC:



e-CONN PART NO:

FTA - DA 14 - 44 P 9

SHELL CODE  
A: W/ ALL SPRING

HOUSING CODE  
1: PBT, BLACK

LED COLOR OPTION

CIRCUIT TYPE

PLATING CODE  
6u' PLATING GOLD

5. ELECTRICAL CHARACTERISTICS :

TEST NOTES: (25±5°C)

1. TR: (100KHz, 0.1V); 100%

PINS: (P1, P3): (J1, J2)=1: 1±3%; (P4, P6): (J3, J6)=1: 1±3%

2. LX: (100KHz, 100mV, 8mA, DC Bias) 100%

PINS: (P1, P3), (P4, P6)=350uH MINIMUM

3. DCR: 100%

PINS: (J1, J2), (J3, J6)=1.2 OHM MAXIMUM

4. HIPOT: 100%

PINS(P1, P3) TO (J1, J2), (P4, P6) TO (J3, J6)=1500VAC FOR 60 SECONDS

5. INSERTION LOSS:

-1.0dB MAXIMUM AT 1MHz TO 100MHz;

6. RETURN LOSS:

-20dB MINIMUM AT 1MHz TO 30MHz;

-15dB MINIMUM AT 30MHz TO 60MHz

-10dB MINIMUM AT 60MHz TO 80MHz

7. CROSS TALK:

-30dB MINIMUM AT 1MHz TO 100MHz

8. COMMON TO COMMON MODE REJECTION:

-30dB MINIMUM AT 1MHz TO 100MHz

9. Balanced DC Line Current:

350mA Max@48V DC Continuous

REV.	ECN. NO.	DRAWN	DATE	EC.content
A.0	NEW	Tony	04/07/2017	



⊗: QUALITY CONTROL ITEM		GENERAL TOLERANCE		PART NO.: FTA-DA14-44P9			
APPROVED		.X± 0.38	X.'± 2'	TITLE: RJ45, CONNECTORS, W/LED, 10P, 8C 10/100MBPS, POE FILTER			
CHECKED		.XX± 0.25	.X'± 1'				
DRAWN		.XXX± 0.13		UNIT: mm	SCALE: 1:1	SHEET: 2/3	REV.: A.0

説明: △:備註 ◇:版本變更 ㊦:尺寸序號 ■:重點尺寸 ▼:CPK尺寸

DOCUMENT NO. : ZER0013/A.3

SIZE: A4

1 2 3 4 5 6 7 8

F

E

D

C

B

A

F

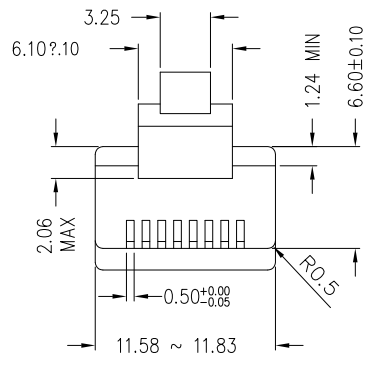
E

D

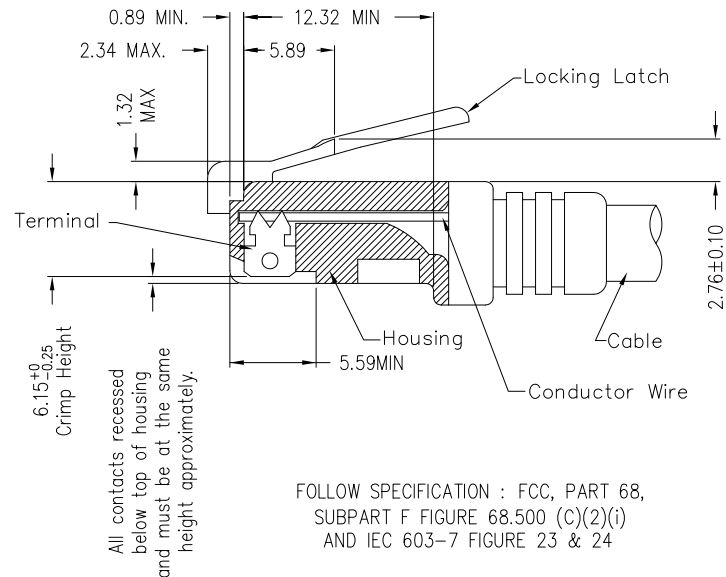
C

B

SIZE: A4



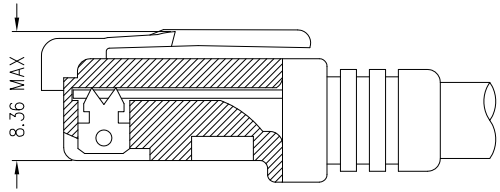
\* There must be no damage to housing or locking latch. There must be no nicks or cuts in cable.  
 \* Durability : 750 cycles generally



All contacts recessed below top of housing and must be at the same height approximately.

FOLLOW SPECIFICATION : FCC, PART 68, SUBPART F FIGURE 68.500 (C)(2)(i) AND IEC 603-7 FIGURE 23 & 24

STANDARD MODULAR PLUG ASSEMBLY



FOLLOW SPECIFICATION : FCC, PART 68, SUBPART F FIGURE 68.500 (C)(2)(ii)

REV.	ECN. NO.	DRAWN	DATE	EC.content
A.0	NEW	Tony	04/07/2017	



⊗: QUALITY CONTROL ITEM		GENERAL TOLERANCE		PART NO.: FTA-DA14-44P9		
APPROVED		.X± 0.38	X.'± 2'	TITLE:RJ45,CONNECTORS,W/LED,10P,8C 10/100MBPS,POE FILTER		
CHECKED		.XX± 0.25	.X'± 1'			
DRAWN		.XXX± 0.13				
		UNIT: mm		SCALE:1:1	SHEET: 3/3	REV.: A.0