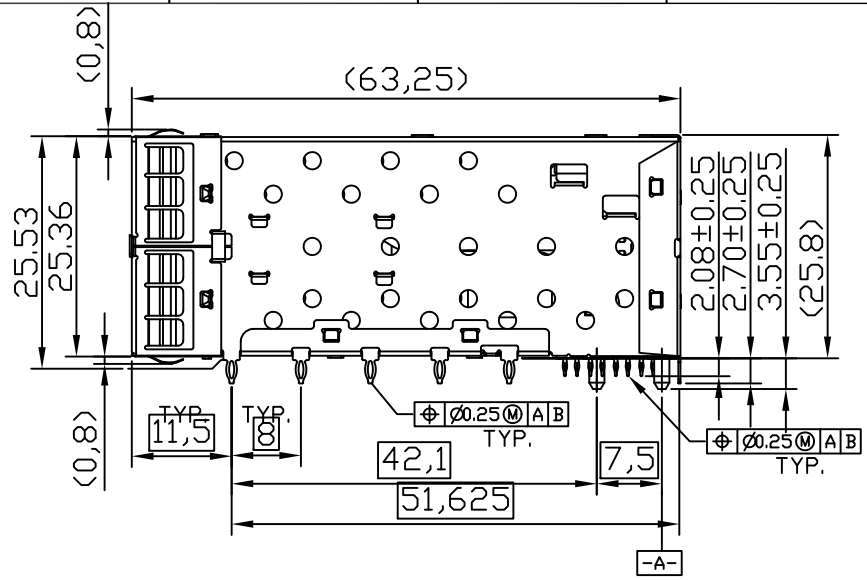
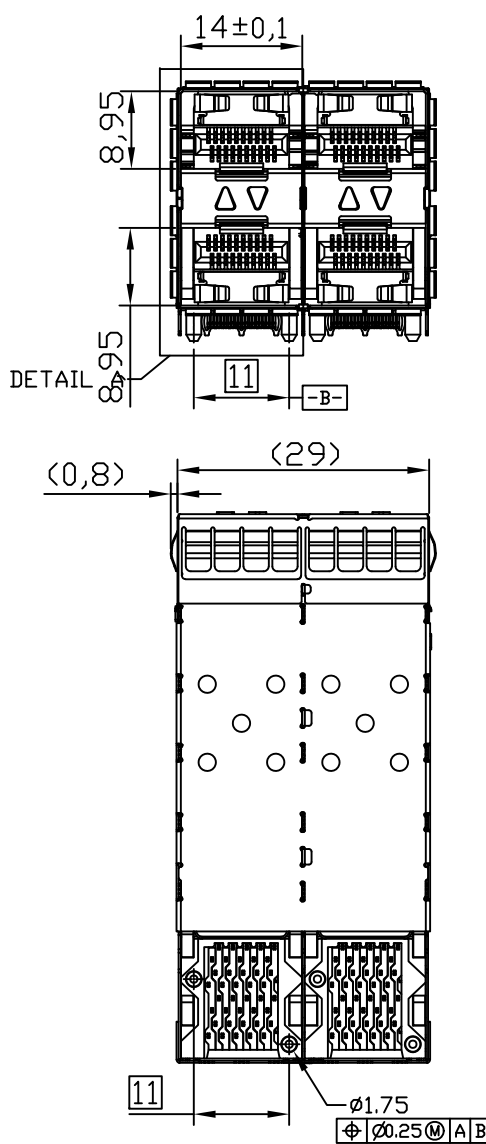
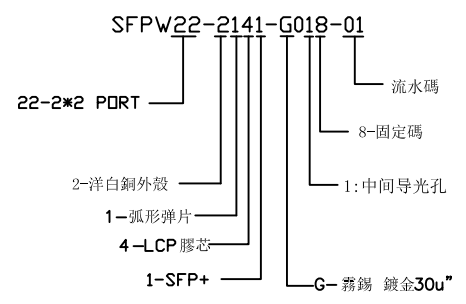


1 2 3 4 5 6 7 8

F
E
D
C
B
A



NOTES:
 MATERIAL:
 CAGE: COPPER ALLOY(C7701) NI-PLATED 30u", THICKNESS 0.25 MM
 CONNECTOR:
 PLASTIC HOUSING: HIGH TEMPERATURE LCP, UL94 V-0.
 LIGHT PIPE: POLYCARBONATE; COLOR: CLEAR
 SPRING: STAINLESS STEEL, THICKNESS 0.20mm
 CONTACTS: PHOSPHOR BRONZE, THICKNESS 0.20mm
 PLATING: 30μ" MIN. GOLD ON MATING AREA,
 150μ" MIN. MATE TIN ON SOLDER TAILS.
 PACKAGING: TRAY PACKAGING.
 OPERATING TEMPERATURE: -40°C TO +85°C
 STORAGE TEMPERATURE: -55°C TO +105°C



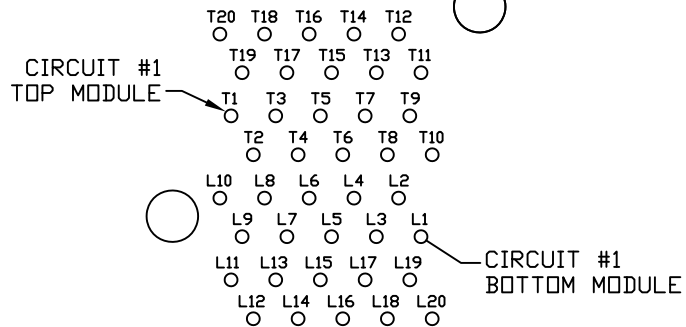
REV.	ECN. NO.	DRAWN	DATE	EC.content
A.0	NEW	Candy	07/15/2024	



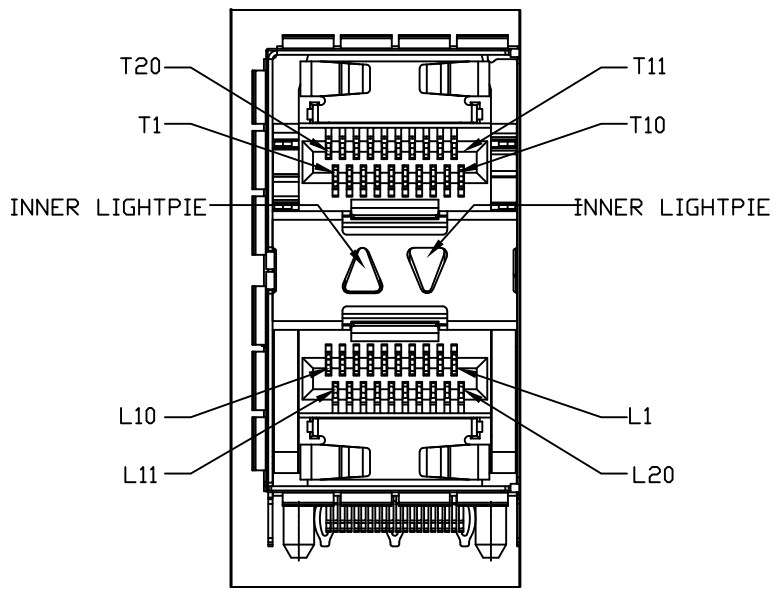
⊗: QUALITY CONTROL ITEM	GENERAL TOLERANCE .X±0.20 X:±2' .XX±0.15 X:±1' .XXX±0.10	PART NO.: SFPW22-2141-G018-01
APPROVED		TITLE: SFP+ 2X2 CAGE+CONNECTOR
CHECKED		UNIT: mm
DRAWN		SCALE: 1:1
		SHEET: 1/4
		REV.: A.0

1 2 3 說明: △: 備註 ◇: 版本變更 (N): 尺寸序號 ■: 重點尺寸 ▼: CPK尺寸 DOCUMENT NO.: ZERO013/A.3

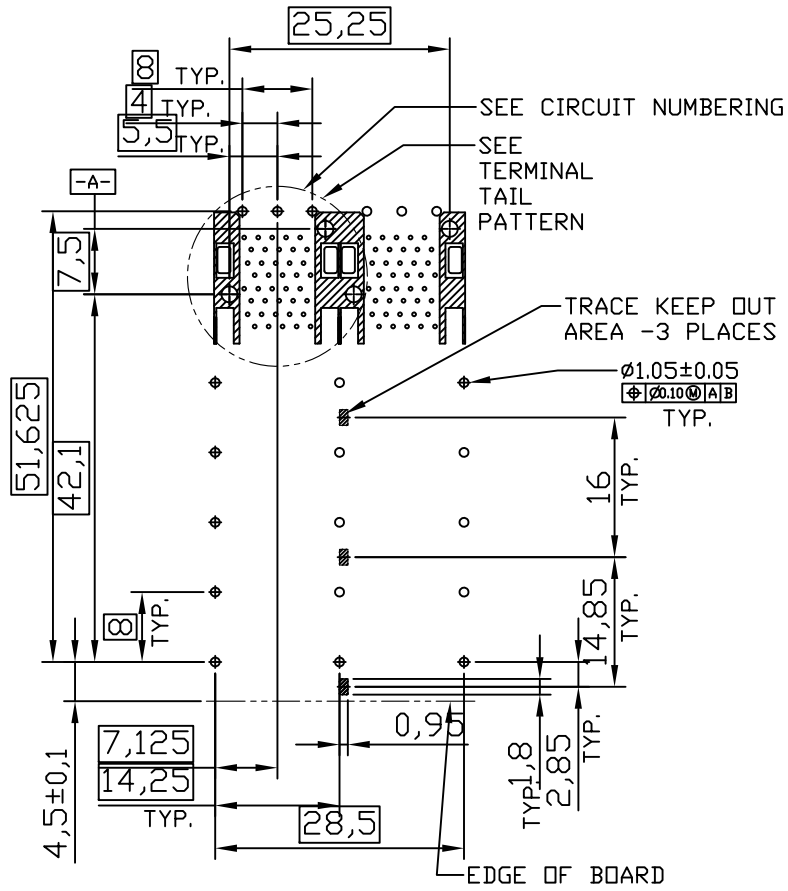
SIZE: A4



CIRCUIT NUMBERING
COMPONENT SIDE OF BOARD



DETAIL A
CIRCUIT NUMBERING
AND LIGHTPIE INDENTIFICATION



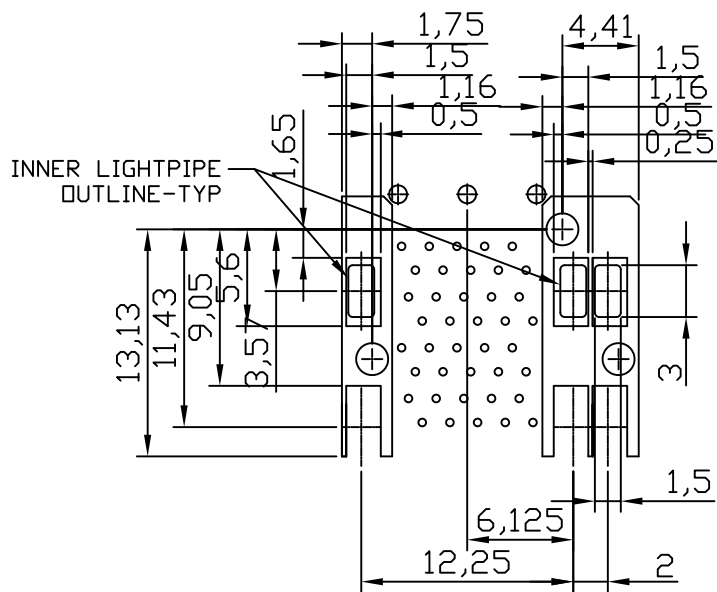
RECOMMENDED PCB LAYOUT - COMPONENT SIDE
RECOMMENDED PCB THICKNESS : 2.36MM(.093 INCH)
(MINIMUM PCB THICKNESS : 1.57)

THE ENTIRE AREA OF THE CONNECTOR FOOTPRINT
TO BE CONSIDERED THE KEEP OUT AREA FOR COMPONENTS
THIS AREA IS INDICATED BY THE DASHED LINE

REV.	ECN. NO.	DRAWN	DATE	EC.content
A.0	NEW	Candy	07/15/2024	

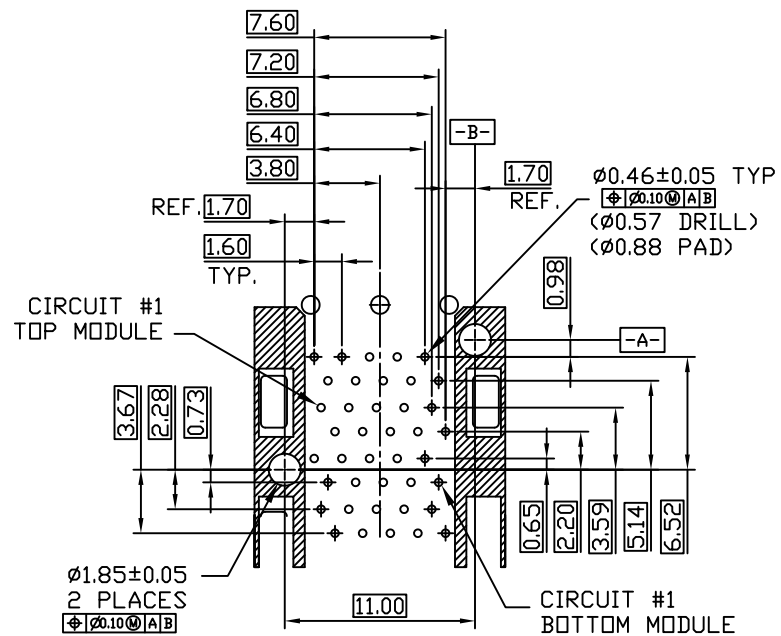


⊗: QUALITY CONTROL ITEM	GENERAL TOLERANCE .X± 0.20 X.'± 2' .XX± 0.10 X.'± 1' .XXX± 0.10	PART NO.: SFPW22-2141-G018-01
APPROVED		TITLE: SFP+ 2X2 CAGE+CONNECTOR
CHECKED		
DRAWN	UNIT: mm	SCALE: 1:1 SHEET: 2/4 REV.: A.0



DETAIL-KEEPOUT ZONES

THE HATCHED AREA IN THIS VIEW INDICATES ZONES THAT ARE OCCUPIED BY THE PLASTIC HOUSING THAT SEATS AGAINST THE PCB AND BY THE VERTICAL METAL CAGE WALL THAT STOPS JUST SHORT OF THE PCB



TERMINAL TAIL PATTERN

REV.	ECN. NO.	DRAWN	DATE	EC.content
A.0	NEW	Candy	07/15/2024	



⊗: QUALITY CONTROL ITEM		GENERAL TOLERANCE		PART NO.: SFPW22-2141-G018-01	
APPROVED		.X± 0.20	X'± 2'	TITLE: SFP+ 2X2 CAGE+CONNECTOR	
CHECKED		.XX± 0.15	.X'± 1'		
DRAWN		.XXX± 0.10			
		UNIT: mm	SCALE: 1:1	SHEET: 3/4	REV.: A.0

1

2

3

説明: △: 備註 ◇: 版本變更 (N): 尺寸序號

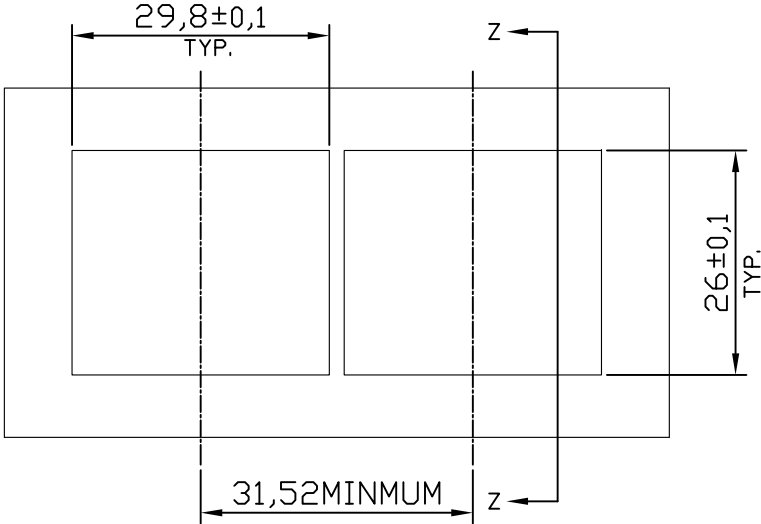
■: 重點尺寸 ▼: CPK 尺寸

DOCUMENT NO.: ZER0013/A.3

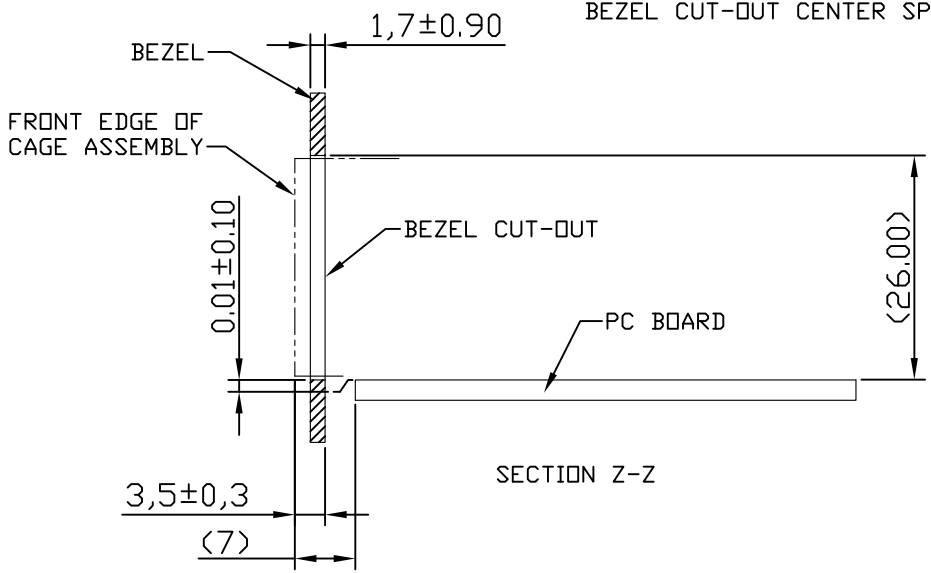
SIZE: A4

1 2 3 4 5 6 7 8

F
E
D
C
B
A



BEZEL CUT-OUT CENTER SPACING DETAIL



SECTION Z-Z

REV.	ECN. NO.	DRAWN	DATE	EC.content
A.0	NEW	Candy	07/15/2024	



⊗: QUALITY CONTROL ITEM		GENERAL TOLERANCE		PART NO.: SFPW22-2141-G018-01	
APPROVED		.X ± 0.20	X' ± 2'	TITLE: SFP+ 2X2 CAGE+CONNECTOR	
CHECKED		.XX ± 0.15	.X' ± 1'		
DRAWN		.XXX ± 0.10			
		UNIT: mm		SCALE: 1:1	SHEET: 4/4
				REV.: A.0	

1 2 3 說明: △: 備註 ◇: 版本變更 ㊟: 尺寸序號 ■: 重點尺寸 ▼: CPK 尺寸 DOCUMENT NO.: ZERO013/A.3

SIZE: A4